

TECHNICAL DATA

PORTO

PRODUCT CODE

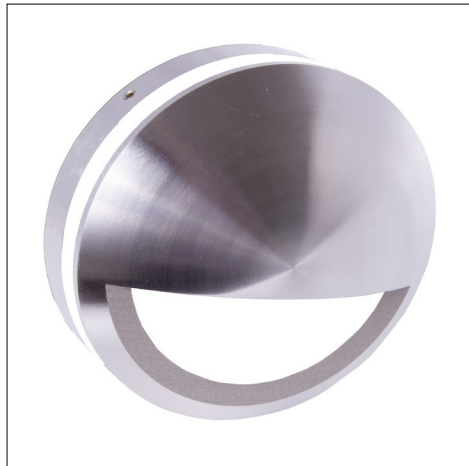
ML5

WARRANTY

3 years guarantee

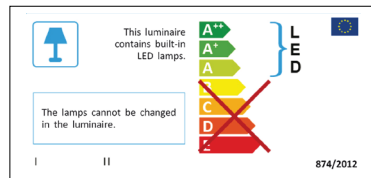


- @GAPLightingLtd
- GAP Lighting Ltd
- /GAPLightingLtd
- GAP Lighting Ltd



PRODUCT DESCRIPTION

Compact solid state LED wall light with eye-lid. Unique GAP design created for halo effect light output and anti-glare feature lighting. Ideal for illuminating walls and driveways.



PRODUCT FEATURES

- Contemporary surface mount 5W LED wall light
- 240V direct to mains
- IP65 Protection
- High powered Edison technology
- Driverless convenience
- Halo effect
- Low profile slim-line design
- Aluminium body
- Tempered frosted glass
- Suitable for interior and exterior applications

PRODUCT DATA

Model	ML5
LED Brand	EDISON
Power	5W
Luminous Flux	110Lm
Protection	IP65
Colour	Warmwhite 3000K White 6000K Blue
CRI	>80
Input	240V
Material	Aluminium Glass
Beam Angle	360°
Life	>30,000 hours
Dimensions	Dia 100mm D 33mm
Approvals	CE ROHS

INSTALLATION

240V direct to mains.
 10 max per 1 circuit.
 Easy fit back plate included.
 Complete with 0.5m of flex.

